

HARTHAM COMMON GREENSPACE ACTION PLAN (GAP) 2018 – 2023



June 2018 v0



CONTENTS

1.0	SITE SUMMARY	4
2.0	SITE DESCRIPTION	5
2.1	<i>Location Map</i>	5
2.2	<i>Site Description Map</i>	6
2.3	<i>Constraints Map</i>	7
3.0	INTRODUCTION	8
4.0	REVIEW OF PREVIOUS GAP	8
5.0	AIMS AND OBJECTIVES	9
6.0	FIVE YEAR ACTION PLAN	13
6.1	<i>Annual Items</i>	14
6.2	<i>Year 1 Action Plan and Map 2018-19</i>	17
6.3	<i>Year 2 Action Plan and Map 2019-20</i>	22
6.4	<i>Year 3-5 Action Plans and Map 2020-23</i>	27
7.0	MONITORING AND REVIEW	30
7.1	<i>Monitoring the Action Plans</i>	30
7.2	<i>Measure of Success</i>	30
7.3	<i>Greenspace Action Plan (GAP) Five Year Review</i>	30
8.0	PROJECT OUTLINES	31
8.1	<i>'Hartham Common And Beyond' Project</i>	31
8.2	<i>Creation of a Welcoming Entrance to Hartham Common</i>	33
8.3	<i>Hartham Common Rivers Project</i>	35
8.4	<i>The Warren - Woodland Management</i>	38
9.0	APPENDICES	40
9.1	<i>Contacts</i>	40
9.2	<i>Links to Other Organisations</i>	41
9.3	<i>Links to Other Documents</i>	42
9.4	<i>Management of Himalayan Balsam</i>	43
9.5	<i>Grazing Meadow Pond Management</i>	45
9.6	<i>Tree Planting</i>	46

1.0 SITE SUMMARY

Site name:	Hartham Common
Area:	19.71 ha (48.7 acres)
Grid ref:	TL 327 132
Address:	Hartham Lane, Hertford, Herts, SG14 1QR
Designations:	Queen Elizabeth II Fields in Trust Registered Common Land (part) Kings Meads CL004 (no commoner's rights attached) Local Wildlife Site (part) R. Beane and R. Lea Confluence Conservation Area (part) Hertford Green Belt
Ownership:	East Herts Council
Leases:	Herts Canoe Club Hertford Tennis Club Everyone Active (Leisure Centre) Sele Farm Bowls Club

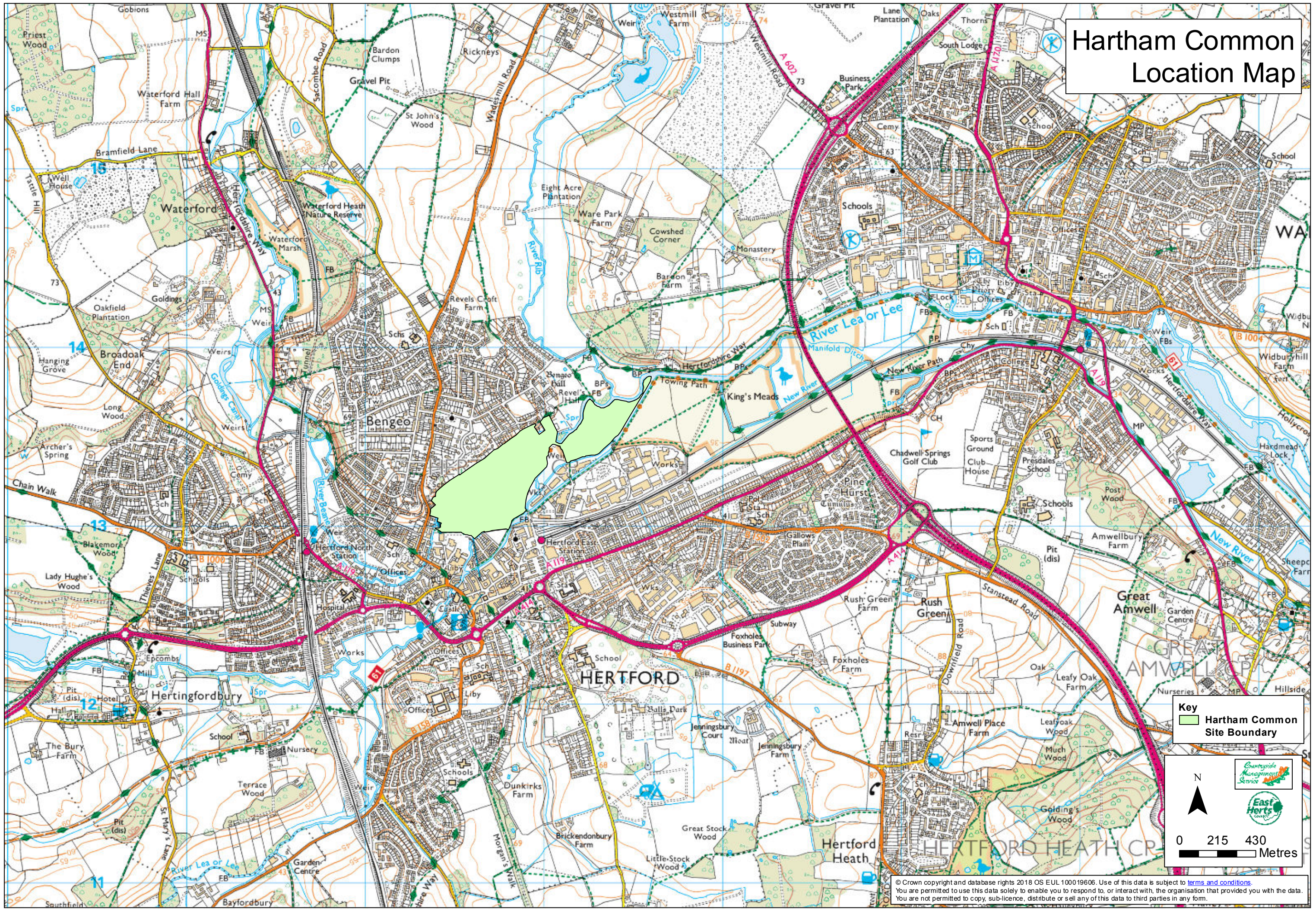
VISION STATEMENT

Hartham Common is a welcoming, diverse, beautiful and tranquil open space for the use and enjoyment of all residents and visitors to Hertford. As the town's premier park, Hartham Common is a haven for exploration and discovery. Its rivers and habitats and the opportunities for leisure and recreation that they offer, will continue to be sensitively managed to ensure that visitors understand the delicate balance that exists between protecting and enjoying our natural environment. The park's fascinating cultural and natural heritage will stand alongside its excellent visitor facilities and community events, ensuring that learning and play are both equally promoted. Accessibility across Hartham Common and connections to Hertford and the surrounding countryside will continue to be maintained and promoted.

The vision over the next five years is to maintain and enhance Hartham Common, keeping up the same high standards that visitors have come to expect whilst supporting and benefiting local wildlife and habitats.

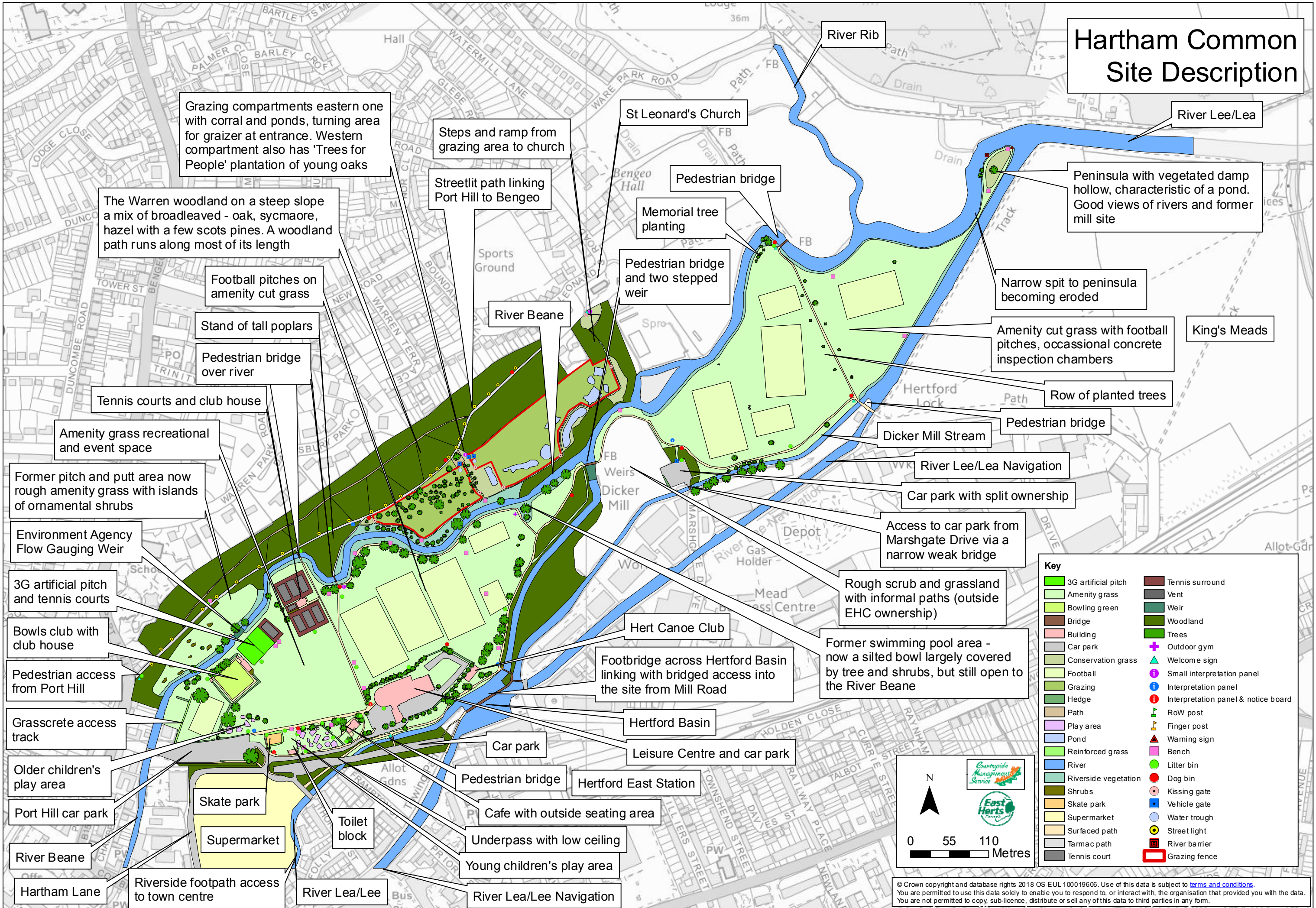
This document sets out the management, maintenance and development framework for Hartham Common to work towards during 2018-23. It is recognised that the systems in place to manage Hartham Common are already very well established and described in previous plans. As such the GAP seeks to identify subtle improvements and further refinement to the established systems.

Hartham Common Location Map



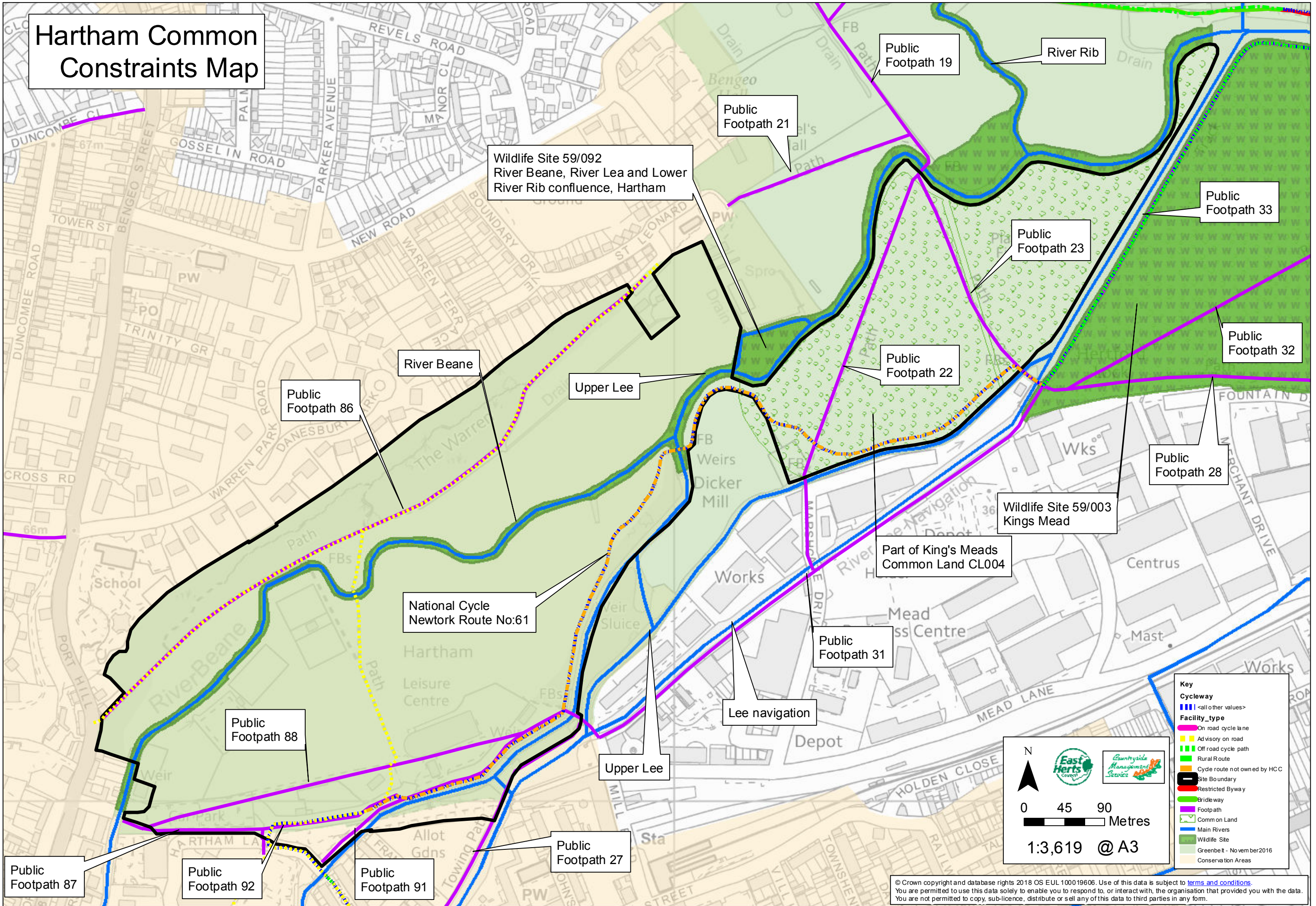
© Crown copyright and database rights 2018 OS EUL 100019606. Use of this data is subject to [terms and conditions](#).
You are permitted to use this data solely to enable you to respond to, or interact with, the organisation that provided you with the data.
You are not permitted to copy, sub-licence, distribute or sell any of this data to third parties in any form.

Hartham Common Site Description



© Crown copyright and database rights 2018 OS EUL 100019606. Use of this data is subject to [terms and conditions](#). You are permitted to use this data solely to enable you to respond to, or interact with, the organisation that provided you with the data. You are not permitted to copy, sub-licence, distribute or sell any of this data to third parties in any form.

Hartham Common Constraints Map



Wildlife Site 59/092
River Beane, River Lea and Lower
River Rib confluence, Hartham

River Beane

Upper Lee

Public Footpath 86

National Cycle
Newtork Route No:61

Public Footpath 88

Public Footpath 87

Public Footpath 92

Public Footpath 91

Public Footpath 27

Lee navigation

Public Footpath 31

Part of King's Meads
Common Land CL004

Wildlife Site 59/003
Kings Mead

Public Footpath 28

Public Footpath 22

Public Footpath 23

Public Footpath 21

Public Footpath 19

River Rib

Public Footpath 33

Public Footpath 32

Key

- Cycleway
 - Blue line: <all other values>
- Facility_type
 - Pink line: On road cycle lane
 - Yellow line: Advisory on road
 - Green line: Off road cycle path
 - Light green line: Rural Route
 - Orange line: Cycle route not owned by HCC
- Site Boundary
 - Black outline: Site Boundary
 - Red line: Restricted Byway
 - Green line: Bridleway
 - Purple line: Footpath
 - Light green area: Comm on Land
 - Blue line: Main Rivers
 - Light green area: Wildlife Site
 - Light green area: Greenbelt - Novem ber2016
 - Light green area: Conservation Areas

0 45 90 Metres

1:3,619 @ A3

East Herts
Countrywide
Management
Services

© Crown copyright and database rights 2018 OS EUL 100019606. Use of this data is subject to [terms and conditions](#). You are permitted to use this data solely to enable you to respond to, or interact with, the organisation that provided you with the data. You are not permitted to copy, sub-licence, distribute or sell any of this data to third parties in any form.

3.0 INTRODUCTION

Hartham Common is a popular open space with over 1000 years of recorded history. It is approximately 19.71 ha (48.7 acres) in size and located within a five minute walk from Hertford Town Centre. The park has important access and ecological links with neighbouring green spaces, particularly through its river corridors.

Users of Hartham Common can benefit from the range of facilities provided at the site including a leisure centre and swimming pool, public toilet, two well equipped play areas, a skate park, football pitches, bowling green, tennis court, trim trail, ample vehicle parking, and extensive riverside and woodland walks. In the summer months refreshments are provided from a kiosk operated by the leisure centre and a variety of events take place through the summer.

2013 saw Hartham Common dedicated as a Queen Elizabeth II Field in celebration of the Queens Diamond Jubilee in 2012. These were created to protect two thousand and twelve outdoor recreational spaces for communities to enjoy now and for generations to come as a permanent living legacy of the Diamond Jubilee and the London 2012 Olympics. The dedication helps to reaffirm the importance Hartham Common to the local community and the commitment of the Council to developing and maintaining the parks high standard.

This Greenspace Action Plan (GAP) will continue where the previous plan left off and look to the future and the next five years of management to develop and enhance Hartham Common for people and wildlife. For more background information of the park please see [Hartham Common Management Plan 2013-18](#).

4.0 REVIEW OF PREVIOUS GAP 2013-18

The first Hartham Common GAP 2013-18 has helped to guide the Council's management of this complex site with its many interacting and conflicting elements over the last five years. The plan included improvements to access onto and across the common with a new surfaced path along the edge of the River Beane and welcoming entrance signage. Interpretation panels have been installed across the site at main entrances with a map for users to orientate themselves and more information about the features of the site. A smaller feature interpretation panel has been installed near to the river informing people about this important habitat.

Larger scale tree works have been undertaken along the banks of the River Lea to reduce shading of the channel. The grazing compartment below 'The Warren' woodland has been extended and includes a perimeter path around the outside of the compartment for people who don't want to walk through the area when the cattle are on site. The Friends of Hartham Common (FoHC) has developed over the last five years with new members joining. Tasks have included sign installation, tree planting, coppicing bankside vegetation, the removal of typha from the ponds in the grazing meadow and control of Himalayan Balsam along the river banks.

Ongoing maintenance operations at Hartham Common include: grass cutting, management and maintenance of the path surface and signage, small scale vegetation management, litter picking, fly tip removal and programmed tree works to address safety issues.

The new GAP will look to further develop the habitats, biodiversity and recreational interest of the site while retaining its historic value.

5.0 AIMS AND OBJECTIVES

A A WELCOMING PLACE

To provide a safe and welcoming experience for local residents and visitors of Hartham Common.

- A1 Maintain all site entrances to form welcoming, visible and attractive gateways to Hartham Common, in proportion to their location.
- A2 Maintain a suitable network of accessible paths and transport routes throughout the site with easy links to other pathways nearby.
- A3 Ensure people walking or travelling in Hertford or the surrounding area are aware of the presence of Hartham Common.
- A4 Develop and promote the 'Hartham Common and Beyond' Project to get people exploring Hartham Common, neighbouring open spaces and the surrounding countryside.
- A5 Re-design the main entrance to Hartham Common improving its appearance and functionality while providing an inviting and accessible gateway into the site which is more representative of the high quality experiences that Hartham Common offers.
- A6 Improve and promote the accessibility of the park's unique habitats (river, woodland, grassland) to visitors while continuing to protect them.

B HEALTHY, SAFE AND SECURE

To ensure that visitors feel safe and secure in all areas of Hartham Common.

- B1 Carryout regular risk assessments of the facilities, natural features and general environment found at Hartham Common.
- B2 Carry out programmed tree works to address safety issues.
- B3 Provide a proactive response to any misuse of the site.
- B4 Continue close liaison between EHC, CMS, FoHC, sports clubs, stakeholders, the local community and local landowners.
- B5 Ensure that visitors to Hartham Common are able to feel as safe and secure as possible in all areas of the site.

C CLEAN AND WELL MAINTAINED

To ensure all furniture and facilities on Hartham Common are in safe and serviceable condition and, where appropriate, of uniform design.

- C1 Monitor the grounds maintenance regimes (including litter collection) to ensure they comply with the contracted standard.
- C2 Establish and introduce a standard, uniform design of furniture.

- C3 Ensure that all fixtures and fittings are maintained in a safe, serviceable and tidy condition.
- C4 Remove clutter, poorly sited furniture, and redundant fixtures.
- C5 Encourage the upkeep of all buildings in a safe and serviceable condition, and used to their full potential.

D SUSTAINABILITY

To ensure ongoing costs are sustainable and secure external funding for capital works.

- D1 Ensuring ongoing maintenance costs are financially sustainable.
- D2 Securing external funding to ensure the viability of capital works.

E CONSERVATION AND HERITAGE

To maintain and enhance the quality and value of Hartham Common's natural habitats, while enhancing the biodiversity, cultural and natural heritage and landscape features for all to enjoy. Provide opportunities for learning and education to help to protect and conserve Hartham Common.

- E1 Maintain and improve the diversity and wildlife value of habitats on site to protect specialist species and biodiversity.
- E2 Identify and develop the ways in which Hartham Common connects with other key wildlife sites in the local area including King's Meads and the Lee Navigation and its habitats.
- E3 Continue the annual grassland management regime across the park. If new vehicle-suitable bridge is installed over the River Lee to Marshgate Drive car park, the edges around the football pitches could be managed as cut and lift.
- E4 Manage the wetter areas of grassland by continuing with grazing practices.
- E5 Continue to manage the ponds in the grazing compartment by regular removal of encroaching Typha and willow saplings.
- E6 Actively manage 'The Warren' woodland by felling, thinning, coppicing, pollarding and planting, to open up glades and improves the views across Hartham Common.
- E7 Manage scrub habitat across the site preventing further encroachment of scrub into the grassland areas.
- E8 Continue with active management of the river and river bank habitat – including; reprofiling bank edges to help prevent erosion and the creation of new wetland habitats and ponds, provision of viewing areas and controlled access, bank side vegetation management, tree management, sustaining wildlife corridors, provision of buffer zones next to the river, in-channel flow deflectors, reporting pollution incidents, restricting unauthorised access and promoting responsible fishing.
- E9 Explore, develop and implement proposals for a new leisure space on the old pitch and putt site.

- E10 Identify, establish and maintain important views and vistas throughout the site to enhance the landscape visitor experience of Hartham Common.
- E11 Maintain and develop the on-site panels interpreting Hartham Common's history, wildlife and management for visitors.
- E12 Continue to monitor, record and learn about the wildlife of Hartham Common.
- E13 Enhance the landscape quality of Hartham Common and the way in which it benefits visitor experience.

F HEALTH AND RECREATION

To encourage the health, fitness and well-being of visitors through a range of high quality recreational opportunities, events and activities.

- F1 Ensure existing recreational and sports facilities are maintained in a safe and serviceable condition.
- F2 Develop the play facilities to provide an exciting, challenging and unique experience for all age groups that befits a destination park.
- F3 Explore the potential for offering new and improved recreational opportunities.
- F4 Promote and support the use of Hartham Common for Hertfordshire Health Walks and as a start location for walking routes into the wider countryside and waterways network.
- F5 Develop ways in which Hartham Common can contribute to health, fitness and well-being.
- F6 Promote the natural environment found at Hartham Common as a visitor attraction.

G COMMUNITY INVOLVEMENT

To involve and utilise key partners and the local community in decision making and support of Hartham Common.

- G1 Continue to support, promote and develop a dedicated Friends Group for Hartham Common.
- G2 Encourage community and volunteer involvement with practical conservation tasks, ecological surveys and events.
- G3 Continue to offer all visitors and local residents a variety of events and activities at Hartham Common.
- G4 Maintain regular contact with key stakeholders and community groups and consult on decision making where appropriate.
- G5 Carry out regular information sharing exercises to let people know what is happening on the site, and to provide an opportunity for feedback.

H MARKETING AND PROMOTION

To raise the profile of Hartham Common and to develop new and innovative ways of promoting the whole site to existing users and new audiences.

- H1 Continue to develop and promote a range of events and activities with partners, key stakeholders and the community; raising awareness and interest in the common.
- H2 Promote awareness and interest in Hartham Common through regularly published stories and news items across a variety of media – websites, ParksHerts, newsletters, posters, publications.
- H3 All publicity materials for the site will be branded and made available in a number of locations and a variety of formats.

I STRATEGIC POSITION

To maximise Hartham Common's potential to contribute to wider strategic networks.

- I1 Ensure Hartham Common is taken into consideration with any plans for the rivers and surrounding landscape.
- I2 Identify Hartham Common's ability to contribute to Green Infrastructure in context with development projects in Hertford and the surrounding area.

J MONITORING AND REVIEW

To learn from experience and monitor effectiveness in order to refine work programmes to make the best use of scarce resources.

- J1 Monitor impact of overall management and uses of Hartham Common.
- J2 Update the progress of the action plans each year on the website.

6.0 FIVE YEAR ACTION PLAN

The action plans below have been established to achieve the vision for Hartham Common and the aims and objectives as set out in section 5.0. The plans take the format of annual work sheets, addressing activities that fall outside of the general contracted maintenance operations. They cover the period from April 2018 to March 2023. Actions have been divided into 'annual' operations that will take place every year along with 'development' actions that focus on raising the profile of the site and 'one off' tasks specific to that year.

Each action is listed in column 3 of the tables; column 1 contains a reference number for ease of use, while column 2 contains the objective ref from section 5.0 of the main document, so that the action can be cross-referenced with the motive. Column 4 indicates the time of year that the activity will take place and column 5 the organisation/s responsible for delivery (see abbreviations below). Where an estimated cost and funding source is known or relevant, these are include in columns 6 and 7. Column 8 contains a reference to further detailed information about each task, contained in Appendices.

ABBREVIATIONS

CMS	Countryside Management Service
CRT	Canal and River Trust (formerly British Waterways)
EA	Environment Agency
EHC	East Herts Council
EvAc	Everyone Active
FC	Football clubs (various)
FoG(HC)	Friends of Group (Hartham Common)
HA	Highways Authority (Hertfordshire County Council - HCC)
HCclub	Herts Canoe Club
HMWT	Herts and Middlesex Wildlife Trust
HTC	Hertford Town Centre
JOC	John O'Connors (EHC Grounds Maintenance Contractor)
RoW	Rights of Way (HCC)
SUS	Sustrans
Vols	Volunteers
YS	Youth Services (HCC)

At the end of each annual period, the action plan will be updated to show the progress of the activities for that year, with completed actions and important notes to be marked in columns 9 and 10.

All dates in the action plan are subject to change, depending on resources and funding.

10. ADDITIONAL APPENDIX - ACTION PLANS AND MAPS 2023-28

10.1 Annual management and development actions

Abbreviations: EHDC – East Herts District Council; CMS – Countryside Management Service; Vols – Volunteers; GGMS - Glendale Grounds Maintenance Services; Con – Contractor; EA – Environment Agency; CRoW – Countryside and Rights of Way; EvAc – Everyone Active; HA – Highways Authority; CRT – Canal and Rivers Trust; SUS- Sustrans, RPII Inspector – Register of Play Inspectors International Inspector; HCClub – Herts Canoe Club, HMWT – Herts & Middlesex Wildlife Trust, HTC – Hertford Town Council.

Biodiversity/Environment

Community

Commercial

Site maintenance

Review/Communication

Action type	Ref no	Obj ref	Action	When	Lead	Delivery	Est Cost £	Funding	Project/ Appendix ref	Status	Notes
	0.1	C1 E3	Deliver Grounds Maintenance Contract.	All year	GGMS	GGMS	Contract rates	GM Budget	n/a		
	0.2	J2	Annual review and update of action plan.	Apr	CMS	EHDC/CMS	Internal resource	n/a	n/a		
	0.3	A2	Carry out annual audit of pathways. (Including the provision of cycling routes)	Apr	EHDC	EHDC	Internal resource	n/a	n/a		
	0.4	B1 B2	Tree safety audit and associated works.	Ongoing	GGMS	EHDC/ GGMS	Contract rates	GM budget	n/a		
	0.5	B1 B2 C3 C5	Quarterly risk assessment and hazard review.	Ongoing	EHDC	EHDC	Internal resource	GM budget	n/a		
	0.6	B1 B2 C3 C5	Arrange for work identified in quarterly risk assessment and hazard review to be completed.	Ongoing	EHDC	GGMS/Con	Contract rates	GM budget	n/a		
	0.7	C2-4	Audit all site furniture and fittings, to include benches, bins, bollards etc. Map all items and produce a report suggesting changes (i.e. replacements/relocations/ refurbishments).	Nov-Dec	EHDC	EHDC	Set contribution	n/a	n/a		
	0.8	C2-4	Undertake repairs/replacements/ installation of site furniture in accordance with previous year's audit.	All year	EHDC	Con/Vols	Internal resource	GM budget	n/a		
	0.9	F1	Play area safety audit by RPII Inspector.	Jul	EHDC	RPII Inspector	Contract rates	GM budget	n/a		

	0.10	B4	Consult with leisure service provider to review how the centre fits within the park beyond.	Ongoing	EHDC	EHDC/ GGMC	Internal resource	GM Budget	n/a		
	0.11	A1	Maintain all entrances across the site free from encroaching vegetation and obstructions.	Ongoing	EHDC	EHDC/ GGMS CMS/Vols	Internal resource	GM Budget	n/a		
	0.12	E4	Regular monitoring of grazing to ensure compliance with grazing agreement, and maintenance and security of infrastructure.	Jun-Sep	EHDC	EHDC	Internal resource	n/a	n/a		
	0.13	A2 G2	Monitor steps and revetments along The Warren woodland path and carry out repairs when needed.	As required	EHDC	Con/CMS/ Vols	Set contribution	n/a	n/a		
	0.14	E5 G2	Volunteer event to pull <i>typha</i> from the ponds within the grazing marsh; pulling to take place before the <i>typha</i> has set seed in summer. Removal of any willow saplings at the same time.	Jun-Jul	CMS	CMS/Vols/	Set contribution	n/a	9.5		
	0.15	E5 G2	Carry out Himalayan balsam pulling along the river-banks.	Jun-Jul	CMS	CMS/Vols/ HCclub	Set contribution	n/a	9.4		
	0.16	E1 G2	Look for opportunities for further tree planting and maintain planted trees.	All year	EHDC	GGMS	n/a	n/a	9.6		
	0.17	D1 D2	Secure external funding to ensure viability of capital works.	Ongoing	CMS	EHDC/CMS	n/a	n/a	n/a		
	0.18	G4-5 H3	Information sharing to take place via regular website updates (EHC, CMS, ParksHerts) and news articles.	All year	EHDC	EHDC/CMS	Internal resource	n/a	n/a		
	0.19	H2-3	Maintain and update Hartham Common webpage with links to new management plan, details of upcoming works, improvements, and events.	All year	EHDC	EHDC	Internal resource	n/a	n/a		
	0.20	F5 H1	Promote site to fitness instructors, boot camp etc.	All year	EvAc	EHDC/EvAc	Internal resource	n/a	n/a		

	0.21	F4 F6 G3 H1-2	Promote a range of free volunteer led Hertfordshire Health Walks on Hartham Common, incorporating circular routes where possible.	All year	CMS	CMS/EHDC/ CRoW	Set contribution	n/a	n/a		
	0.22	G5 H1-2 F6	Small site modifications to take place to allow for future events on the site.	All year	EHDC	EHDC/EvAc	Internal resource	n/a	n/a		
	0.23	I1-2	Maximise Hartham Common's potential to contribute to wider strategic networks.	Ongoing	EHDC	EHDC	Internal resource	n/a	n/a		
	0.24	G2-G5	Engage with local groups that are interested in Hartham Common and make use of their skills/time.	Ongoing	EHDC	EHDC/CMS	n/a	n/a	n/a		
	0.25	E1 E3	Cut and collect areas around football pitches to the east of the site, if the access allows, at least during the off-season.	Annually	GGMS	EHDC/ GGMS	GM Budget	n/a	n/a		
	0.26	A2 G2	Cut and clear grass from steps towards St Leonard's Church twice a year.	April and Aug	CMS	CMS/Vols	Set contribution	n/a	n/a		
	0.27	F3, F5, F6	Assess what provision needs to be in place to provide safe access to the river for swimming and if signage is needed.	By April 2024	EHDC	EHDC	n/a	n/a	n/a		
	0.28	B3, B5, C3	Continue to work on initiatives to engage young people and work with the police to tackle anti-social behaviour.	Ongoing	EHDC	EHDC	n/a	n/a	n/a		

10.2 Year 1 actions 2023-24

Action type	Ref no	Obj ref	Action	When	Lead	Delivery	Est Cost £	Funding	Project/ Appendix ref	Status	Notes
	1.1	E1 E2 E12	Discuss annual surveying of otter and water vole with HMWT.	Jul	CMS	Vols/HMWT	Internal resource	n/a	n/a		
	1.2	E1 E2 E5 E12	Survey wet pools and ponds to provide information about their condition and species that they support to help to inform management.	May-June	CMS	Con	Internal resource	n/a	n/a		
	1.3	A2	Consult with Herts Rights of Way regarding the condition and long-term maintenance of FP 86 between Port Hill and St Leonard's Church; agree a maintenance plan and seek funding for improvements.	Nov-Dec	EHDC/ CMS	EHDC/ CMS	Internal resource	n/a	n/a		
	1.4	A2 B4	Confirm ownership of bridges and organise safety checks and any repairs required (bridge by tennis courts and Marshgate Drive).	Aug	EDHC	EHDC/Con	Internal resource	n/a	n/a		
	1.5	A1 A2	Liaise with the owners of Marshgate Drive bridge (River Lee) and the car park re improvement works required to the bridge (weight restriction for maintenance vehicles) and car park resurfacing.	Aug	EDHC	EHDC	Internal resource	n/a	n/a		
	1.6	A1 E7 E10	Carry out works sensitively to improve the views and access from/to Marshgate Drive car park into the park. Once ownership has been confirmed	Oct-Feb	CMS	CMS/Vols	Internal resource	n/a	n/a		
	1.7	B4	Communicate with the owners of the area of land near Marshgate Drive to find out if it can be transferred into EHDC ownership.	Aug	EHDC	EHDC	Internal resource	n/a	n/a		
	1.8	B3	Review non-refundable deposits related to staging of large events to account for additional litter costs/ commission additional litter picking when required.	Dec	EHDC	EHDC	Internal resource	n/a	n/a		
	1.9	A6 E8 E10	Rotate or install some of the benches near the eastern football pitches to face the river.	Apr-Jun	EHDC	Con	Internal resource	n/a	n/a		

	1.10	E7 G2	Maintain by coppicing and thinning vegetation in identified areas to establish viewpoints along the rivers and between different parts of the site.	Ongoing	CMS	CMS/Vols/ GGMS	Set contribution	n/a	n/a		
	1.11	E11	Replace/repair damaged interpretation panel by bridge from Mill End and interpretation panel north of the River Bean and close to FP86.	Apr-Jun	CMS	EHDC/CMS/ Vols	Internal resource	n/a	n/a		
	1.12	A3	Consult with the Highway Authority and negotiate the installation of brown tourist signs on the road networks around Hartham Common.	May-Jun	EHDC	CMS/HA	Internal resource	n/a	n/a		
	1.13	A2 G2	Surface and reprofile path from St Lenard's Church to the steps and replace steps.	Aug-Oct	EHDC	CMS/Vols/ Con	Set contribution	Funding to be identified.	n/a		
	1.14	A6 E1 E8 E11 F6	Seek funding for the 'Hartham Common Rivers Project' Projects to include the following: <ul style="list-style-type: none"> • Improvement to bank profiles. • Revetment of the spit and establish pond area; • Tree works to reduce shading of river. • Rewetting of the former swimming pool, to included vegetation clearance and dredging of silt • Interpretation and viewing platform. 	Jul-Mar	CMS	CMS/EHDC/ EA	TBC	External funding	8.3		
	1.15	E3	Continue to maintain conservation cut margins beside all watercourses.	Ongoing	GGMS	GGMS	Contract rates	GM budget	n/a		
	1.16	B3 E8	Repair barrier to restrict unauthorised boat access up the River Beane from the Lee Navigation, to allow it to be locked open if needed.	Apr-Jun	EHDC	EHDC	Internal resource	n/a	n/a		
	1.17	E6 E12	Commission bat survey of The Warren.	Sept	CMS	Con	Internal resource	n/a	n/a		
	1.18	E6 E12	Apply for conservation area consent for The Warren tree work.	Sept	CMS	CMS	n/a	n/a	n/a		
	1.19	E6 E12	Selectively fell compartments of the Warren Woodland based on the Woodland Management Plan and replant with appropriate native tree mix.	Oct-Feb	CMS	GGMS	Internal resource	Tree work budget/ External funding	8.4		

	1.20	E9	Explore, develop proposals for a new leisure space on the old pitch and putt site.	Apr-Jul	EHDC	EHDC	Internal resource	n/a	n/a		
	1.21	E8	Find out what the current angling club arrangements are with use of the river.	Ongoing	EHDC	EHDC	Internal resource	n/a	n/a		
	1.22	J1-J2	Review Year 1 Action Plan.	Mar 24	CMS	EHDC/CMS	Internal resource	n/a	n/a		

10.3 Year 2 actions 2024-25

Action type	Ref no	Obj ref	Action	When	Lead	Delivery	Est Cost £	Funding	Project/ Appendix ref	Status	Notes
	2.1	A6 E1 E8 F6 E11	Implement works identified under the 'Hartham Common Rivers Project' once funding is secured and consents granted. *Subject to funding*	All year	CMS	CMS/EHDC/ Con	TBC	External funding	8.3		
	2.1a	A6 E1 E8 F6 E11	Carry out improvements to bank profiles for wildlife and stability. *Subject to funding*	Apr-Mar	CMS	CMS/EHDC/ Con	TBC	External funding	8.3		
	2.1b	A6 E1 E8 F6 E11	Undertake revetment of the spit and establish pond area. *Subject to funding*	Apr-Mar	CMS	CMS/EHDC/ Con	TBC	External funding	8.3		
	2.1c	A6 E1 E8 F6 E11	Carry out tree works to reduce shading of river and new planting. *Subject to funding*	Apr-Mar	CMS	CMS/EHDC/ Con	TBC	External funding	8.3		
	2.1d	A6 E1 E8 F6 E11	Undertake rewetting of the former swimming pool, to include vegetation clearance and dredging of silt. *Subject to funding*	Apr-Mar	CMS	CMS/EHDC/ Con	TBC	External funding	8.3		
	2.1e	A6 E1 E8 F6 E11	Develop and install new interpretation. *Subject to funding*	Apr-Mar	CMS	CMS/EHDC/ Con/Vols	TBC	External funding	8.3		
	2.1f	A6 E1 E8 F6 E11	Liaise with local landowners adjacent to the common to reduce cattle damage to the soil.	Apr-Mar	CMS	CMS/EHDC/ Con	TBC	External funding	8.3		
	2.1g	A6 E1 E8 F6 E11	Partially remove weir in River Lea, just upstream of the Lee Navigation. to enable fish passage and remove impoundment. Consideration for the impact of this on other users of the site. *Subject to funding*	Apr-Mar	CMS	EA/Con	TBC	External funding	8.3		
	2.2	A3	Consult with Canal and River Trust about including Hartham Common on fingerposts and other signage.	May-Jun	EHDC	EHDC/CRT	Internal resource	n/a	n/a		
	2.3	A3	Ensure Hartham Common is included on any appropriate new signage in Hertford Town Centre/Sustrans routes.	May-Jun	EHDC	EHDC/HTC/ SUS	Internal resource	n/a	n/a		
	2.4	G3	Investigate the potential for a barbeque area	Apr-Jun	EHDC	EHDC	Internal resource	n/a	n/a		

	2.5	E6 E12	Apply for conservation area consent for the Warren tree work.	Sept	CMS	CMS	n/a	n/a	n/a		
	2.6	E6 E12	Selectively fell compartments of the Warren Woodland based on the Woodland Management Plan and replant with appropriate native tree mix.	Oct-Feb	CMS	GGMS	TBC	Tree work budget/ External funding	8.4		
	2.7	E9	Implement the plans for a new leisure space on Hartham Common on the old pitch and putt site. Plans to be developed in year 1 of this action plan.	Oct-Feb	EHDC	EHDC/CMS/ Vols/Con	Set contribution	n/a	n/a		
	2.8	E7	Apply for felling licence to coppice/thin trees in section of the path/steps up to St Leonards Church	Aug-Sept	CMS	CMS/FC	Set contribution	n/a	n/a		
	2.9	E7 G2	Light coppice/thin of trees in top section of the woodland either side of path (steps/ramp) to St Leonards Church to allow in more light and improve drainage.	Oct-Feb	CMS	CMS/Vols/ Con	Set contribution	n/a	n/a		
	2.10	E7	Apply for felling licence to coppice/thin/remove some overhanging branches from willow overhanging the River Beane near the grazing compartment, if Hartham Common Rivers Project does not go ahead	June-Aug	CMS	CMS/FC	Set contribution	n/a	n/a		
	2.11	E7 G2	Coppice/thin shrubs and small trees between the Warren footpath and former pitch and putt area.	Oct-Feb	CMS	GGMS/CMS/ Vols	Set contribution	n/a	n/a		
	2.12	E13 F3	Creation a formal river access point the River Beane with improved access to the water's edge. *subject to funding*	By 2025	EHDC	EHDC/CMS/ Con	n/a	Possibly section 106	n/a		
	2.13	J1-2	Review Year 2 Action Plan.	Mar 25	CMS	EHDC/CMS	Internal resource	n/a	n/a		

10.4 Years 3-5 actions 2025-28

Action type	Ref no	Obj ref	Action	When	Responsible	Delivery	Estd Cost £	Funding	Project/ Appendix ref	Status	Notes
	3.1	A2 G3	Improve event access.	Year 3 Apr-Sep	EHDC	EHDC	Internal resource	n/a	n/a		
	3.2	A2 A6 E6	Look at feasibility and costs to control erosion on the slopes of The Warren woodland (particularly in the middle); including the provision of seating.	Year 3 Jul-Sep	EHDC	EHDC/CMS /Con	Internal resource	n/a	n/a		
	3.3	H1	Review provision of catering on site.	Year 3	EHDC	EHDC	Internal resource	n/a	n/a		
	3.4	E7 G2	Coppice woodland edge to prevent encroachment into the grazing compartment.	Year 3 Oct-Feb	CMS	CMS/Vols/ GGMS	Set contribution	n/a	n/a		
	3.5	E6 E12	Apply for conservation area consent for the Warren tree work.	Year 3 Sept	CMS	CMS	n/a	n/a	n/a		
	3.6	E6 E12	Selectively fell compartments of the Warren Woodland based on the Woodland Management Plan and replant with appropriate native tree mix.	Year 3 Oct-Feb	CMS	GGMS	Internal resource	Tree work budget/ External funding	8.4		
	3.7	E7 G2	Coppice and thin established shrub vegetation around the footbridge by the weir.	Year 4 Oct-Feb	CMS	CMS/Vols	Set contribution	n/a	n/a		
	3.8	E6 E12	Apply for conservation area consent for the Warren tree work.	Year 4 Sept	CMS	CMS	n/a	n/a	n/a		
	3.9	E6 E12	Selectively fell compartments of the Warren Woodland based on the Woodland Management Plan and replant with appropriate native tree mix.	Year 4 Oct-Feb	CMS	GGMS	Internal resource	Tree work budget/ External funding	8.4		
	3.10	E6 E12	Apply for conservation area consent for the Warren tree work.	Year 5 Sept	CMS	CMS	n/a	n/a	n/a		
	3.11	E6 E12	Selectively fell compartments of the Warren Woodland based on the Woodland Management Plan and replant with appropriate native tree mix.	Year 5 Oct-Feb	CMS	GGMS	Internal resource	Tree work budget/ External funding	8.4		
	3.12	J1-2	Review Year 3 Action Plan.	Year 3 Mar 21	CMS	EHDC/CMS	Internal resource	n/a	n/a		
	3.13	J1-2	Review Year 4 Action Plan.	Year 4 Mar 22	CMS	EHDC/CMS	Internal resource	n/a	n/a		

	3.14	J1-2	Review Year 5 Action Plan and put together a new Greenspace Action Plan for 2028 – 2033.	Year 5 Mar 23	CMS	EHDC/CMS	Internal resource	n/a	n/a		
--	------	------	------------------------------------------------------------------------------------------	------------------	-----	----------	-------------------	-----	-----	--	--

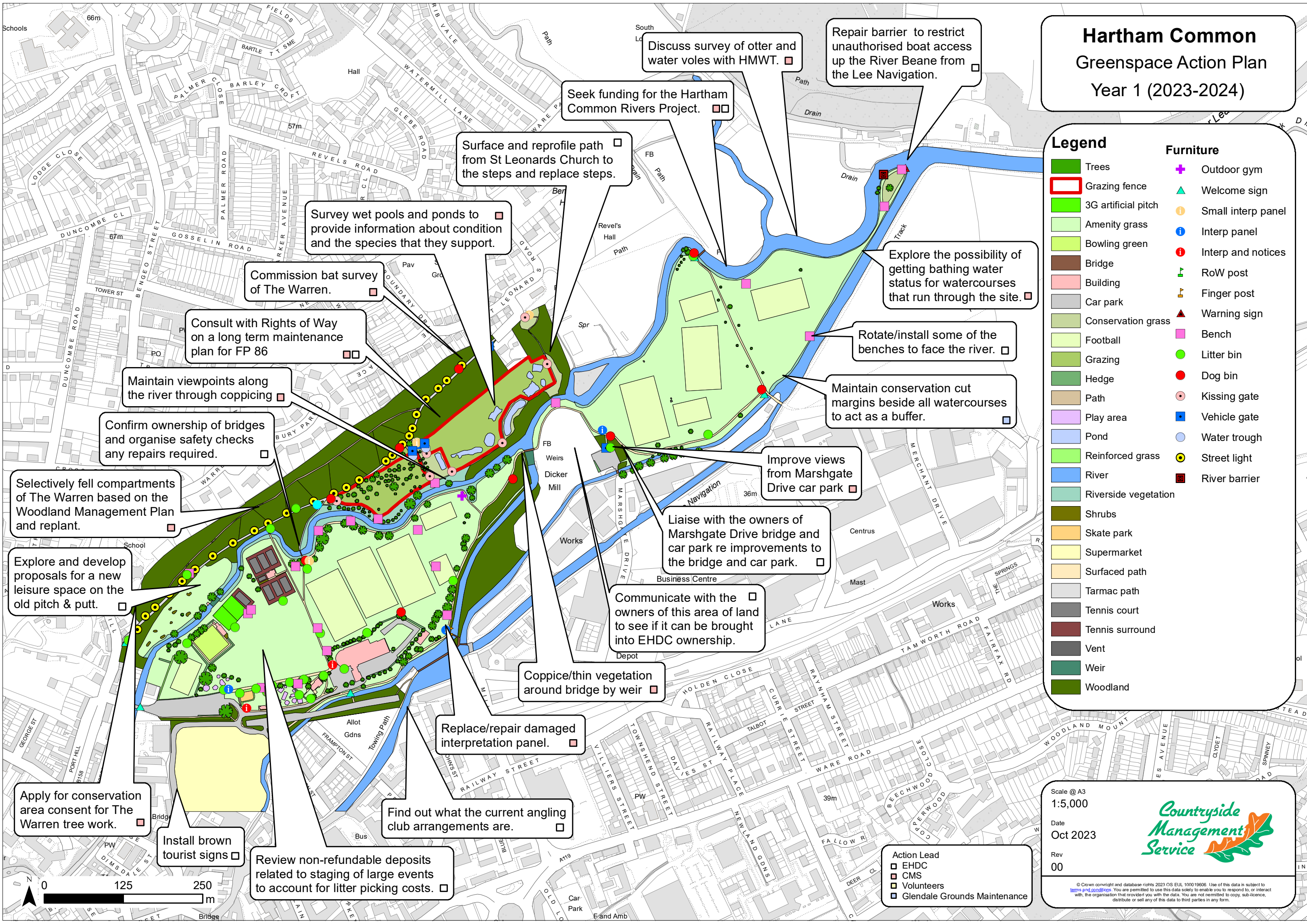
Hartham Common Greenspace Action Plan Year 1 (2023-2024)

Legend

- | | | | |
|--|----------------------|--|--------------------|
| | Trees | | Outdoor gym |
| | Grazing fence | | Welcome sign |
| | 3G artificial pitch | | Small interp panel |
| | Amenity grass | | Interp panel |
| | Bowling green | | Interp and notices |
| | Bridge | | RoW post |
| | Building | | Finger post |
| | Car park | | Warning sign |
| | Conservation grass | | Bench |
| | Football | | Litter bin |
| | Grazing | | Dog bin |
| | Hedge | | Kissing gate |
| | Path | | Vehicle gate |
| | Play area | | Water trough |
| | Pond | | Street light |
| | Reinforced grass | | River barrier |
| | River | | |
| | Riverside vegetation | | |
| | Shrubs | | |
| | Skate park | | |
| | Supermarket | | |
| | Surfaced path | | |
| | Tarmac path | | |
| | Tennis court | | |
| | Tennis surround | | |
| | Vent | | |
| | Weir | | |
| | Woodland | | |

Furniture

- | | |
|--|--------------------|
| | Outdoor gym |
| | Welcome sign |
| | Small interp panel |
| | Interp panel |
| | Interp and notices |
| | RoW post |
| | Finger post |
| | Warning sign |
| | Bench |
| | Litter bin |
| | Dog bin |
| | Kissing gate |
| | Vehicle gate |
| | Water trough |
| | Street light |
| | River barrier |



Discuss survey of otter and water voles with HMWT. □

Repair barrier to restrict unauthorised boat access up the River Beane from the Lee Navigation. □

Seek funding for the Hartham Common Rivers Project. □□

Surface and reprofile path from St Leonards Church to the steps and replace steps. □

Survey wet pools and ponds to provide information about condition and the species that they support. □

Commission bat survey of The Warren. □

Consult with Rights of Way on a long term maintenance plan for FP 86 □□

Maintain viewpoints along the river through coppicing □

Confirm ownership of bridges and organise safety checks any repairs required. □

Selectively fell compartments of The Warren based on the Woodland Management Plan and replant. □

Explore and develop proposals for a new leisure space on the old pitch & putt. □

Apply for conservation area consent for The Warren tree work. □

Install brown tourist signs □

Review non-refundable deposits related to staging of large events to account for litter picking costs. □

Find out what the current angling club arrangements are. □

Replace/repair damaged interpretation panel. □

Coppice/thin vegetation around bridge by weir □

Communicate with the owners of this area of land to see if it can be brought into EHDC ownership. □

Liaise with the owners of Marshgate Drive bridge and car park re improvements to the bridge and car park. □

Improve views from Marshgate Drive car park □

Maintain conservation cut margins beside all watercourses to act as a buffer. □

Rotate/install some of the benches to face the river. □

Explore the possibility of getting bathing water status for watercourses that run through the site. □

Explore the possibility of getting bathing water status for watercourses that run through the site. □

Explore the possibility of getting bathing water status for watercourses that run through the site. □

Scale @ A3
1:5,000

Date
Oct 2023

Rev
00



- Action Lead
- EHDC
 - CMS
 - Volunteers
 - Glendale Grounds Maintenance

© Crown copyright and database rights 2023 OS EUL 1000 19606. Use of this data is subject to <https://www.gov.uk/guidance/crown-copyright>. You are permitted to use this data solely to enable you to respond to, or interact with, the organisation that provided you with the data. You are not permitted to copy, sub-licence, distribute or sell any of this data to third parties in any form.

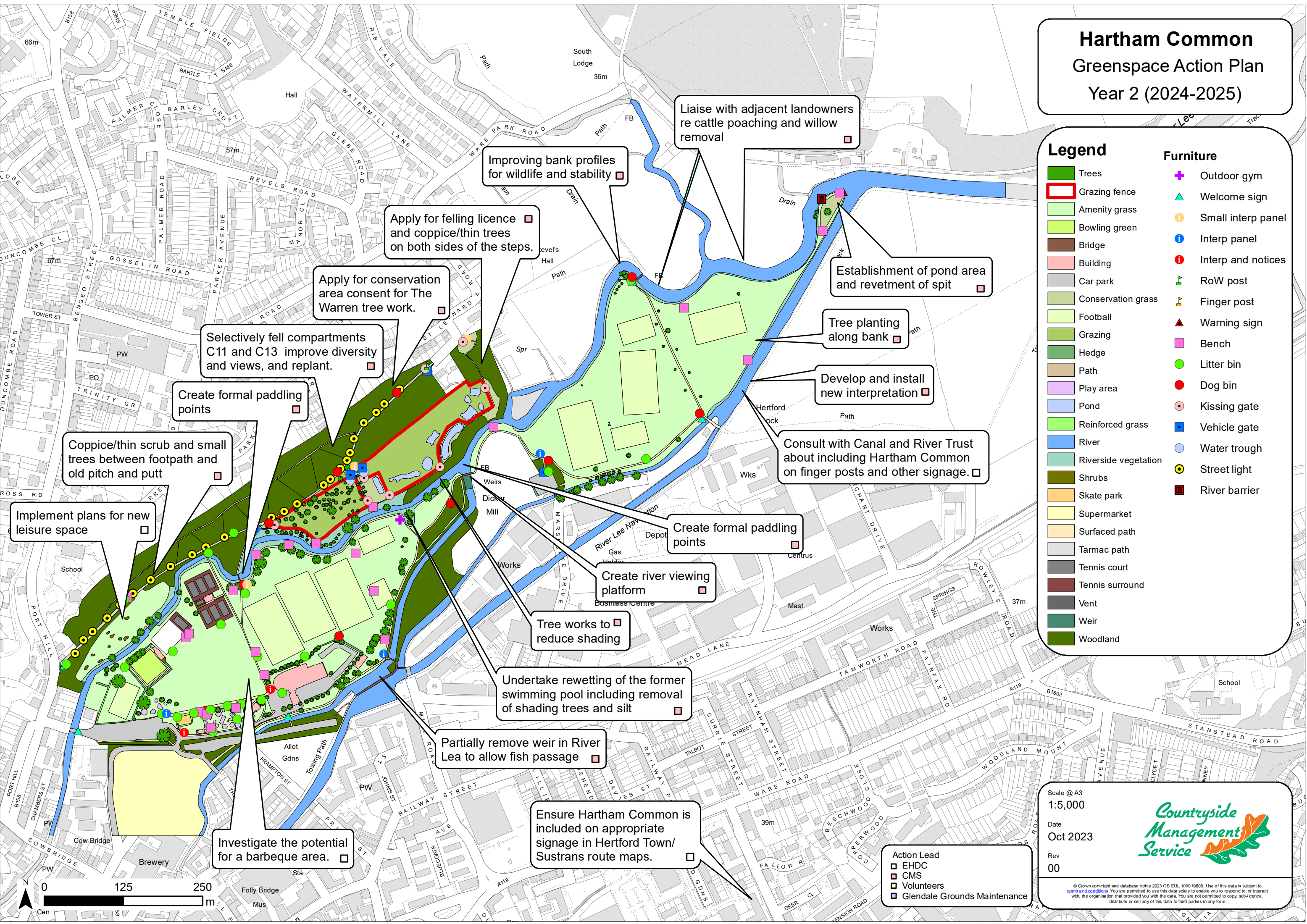
Hartham Common Greenspace Action Plan Year 2 (2024-2025)

Legend

- Trees
- Grazing fence
- Amenity grass
- Bowling green
- Bridge
- Building
- Car park
- Conservation grass
- Football
- Grazing
- Hedge
- Path
- Play area
- Pond
- Reinforced grass
- Riverside vegetation
- Shrubs
- Skate park
- Supermarket
- Surfaced path
- Tarmac path
- Tennis court
- Tennis surround
- Vent
- Weir
- Woodland

Furniture

- + Outdoor gym
- ▲ Welcome sign
- i Small interp panel
- i Interp panel
- i Interp and notices
- 🎵 RoW post
- 📍 Finger post
- ▲ Warning sign
- Bench
- Litter bin
- Dog bin
- Kissing gate
- Vehicle gate
- Water trough
- Street light
- River barrier



Liaise with adjacent landowners re cattle poaching and willow removal

Improving bank profiles for wildlife and stability

Apply for felling licence and coppice/thin trees on both sides of the steps.

Apply for conservation area consent for The Warren tree work.

Selectively fell compartments C11 and C13 improve diversity and views, and replant.

Create formal paddling points

Coppice/thin scrub and small trees between footpath and old pitch and putt

Implement plans for new leisure space

Establishment of pond area and revetment of spit

Tree planting along bank

Develop and install new interpretation

Consult with Canal and River Trust about including Hartham Common on finger posts and other signage.

Create formal paddling points

Create river viewing platform

Tree works to reduce shading

Undertake rewetting of the former swimming pool including removal of shading trees and silt

Partially remove weir in River Lea to allow fish passage

Ensure Hartham Common is included on appropriate signage in Hertford Town/ Sustrans route maps.

Investigate the potential for a barbeque area.

- Action Lead
- EHDC
 - CMS
 - Volunteers
 - Glendale Grounds Maintenance

Scale @ A3
1:5,000
Date
Oct 2023
Rev
00

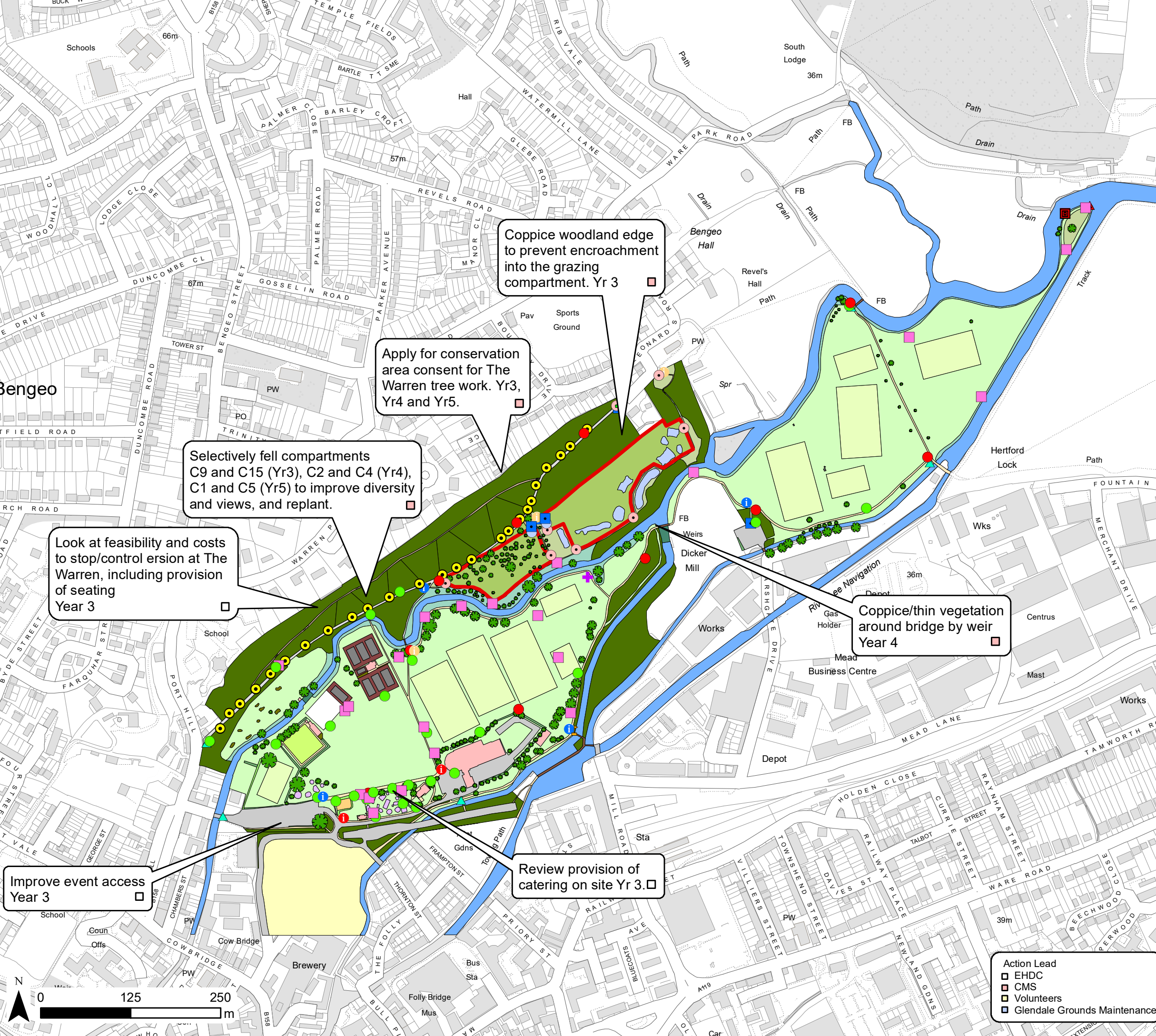


© Crown copyright and database rights 2023 OS EUL 1000 19006. Use of this data is subject to [terms and conditions](#). You are permitted to use this data solely to enable you to respond to, or interact with, the organisation that provided you with the data. You are not permitted to copy, sub-licence, distribute or sell any of this data to third parties in any form.

Hartham Common Greenspace Action Plan Year 3-5 (2025-2028)

Legend

	Trees		Outdoor gym
	Grazing fence		Welcome sign
	Amenity grass		Small interp panel
	Bowling green		Interp panel
	Bridge		Interp and notices
	Building		RoW post
	Car park		Finger post
	Conservation grass		Warning sign
	Football		Bench
	Grazing		Litter bin
	Hedge		Dog bin
	Path		Kissing gate
	Play area		Vehicle gate
	Pond		Water trough
	Reinforced grass		Street light
	Riverside vegetation		River barrier
	Shrubs		
	Skate park		
	Supermarket		
	Surfaced path		
	Tarmac path		
	Tennis court		
	Tennis surround		
	Vent		
	Weir		
	Woodland		



Coppice woodland edge to prevent encroachment into the grazing compartment. Yr 3

Apply for conservation area consent for The Warren tree work. Yr3, Yr4 and Yr5.

Selectively fell compartments C9 and C15 (Yr3), C2 and C4 (Yr4), C1 and C5 (Yr5) to improve diversity and views, and replant.

Look at feasibility and costs to stop/control erosion at The Warren, including provision of seating Year 3

Coppice/thin vegetation around bridge by weir Year 4

Improve event access Year 3

Review provision of catering on site Yr 3.

- Action Lead**
- EHDC
 - CMS
 - Volunteers
 - Glendale Grounds Maintenance

Scale @ A3
1:5,000
Date
Oct 2023
Rev
00



© Crown copyright and database rights 2023 OS EUL 1000 19606. Use of this data is subject to https://www.gov.uk/government/uploads/system/uploads/attachment_data/file/100000/copying-our-information.pdf. You are permitted to use this data solely to enable you to respond to, or interact with, the organisation that provided you with the data. You are not permitted to copy, sub-licence, distribute or sell any of this data to third parties in any form.

